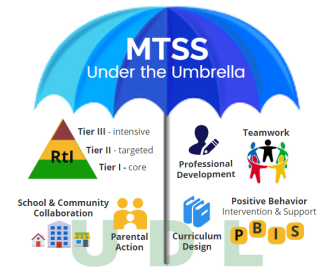


What is MTSS?

MTSS (Multi-Tiered System of Supports) is a comprehensive framework designed to make sure all students receive the academic, behavioral, and social support they all need. It is a tiered approach to providing interventions and services, ensuring all students are getting the support they need.



Below are the definitions for the different tiers of support throughout the school day, the assessments that we use to decide the supports, and what the interventions may look like within the school day.

Defining the Tiers of Instruction:

Tier 1:	This is grade level core instruction which is explicitly taught during the school day. There are universal interventions also being provided to all students during the grade level instructional time. Teachers use evidence-based teaching practices to support all students in the class.
Tier 2:	Targeted interventions for students who may require additional support than what is provided during the initial instruction/skill.
Tier 3:	Intensive targeted interventions for students who require the most support on a specific skill.

Assessments (Screening and Progress Monitoring)

Data-informed decisions are made based on student performance of the assessments listed below:

Type of Screener	Frequency
Universal Screener <ul style="list-style-type: none"> • <i>aimswebPlus (Reading & Math)</i> • <i>BIMAS (Social Emotional)</i> 	3 times a year
Diagnostic Screener <ul style="list-style-type: none"> • <i>Quick Phonics Screener (QPS) (Reading)</i> • <i>Grade Level Readiness Screener (Delta Math)</i> 	3 times a year
Curriculum Based Measures <ul style="list-style-type: none"> • <i>Curriculum Assessments</i> • <i>Common Formative Assessments</i> 	During each grade level unit

*Parent letters are sent home when students qualify for or exit from interventions based on the assessments listed

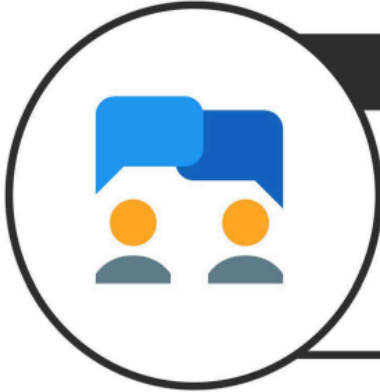
What can I do as a parent to help my student's progress?



Celebrate Your Child's Growth

Intensive intervention is customized to address your child's unique needs. As a result:

- Each child's intervention plan will look different.
- Each child's progress is compared to his or her own individual goals, not other students.
- Parents should provide encouragement and celebrate success, even small improvements.



Communicate!

- Share openly about your child. You may know things that the school doesn't.
- Confused about the data, tests, or interventions? Ask for clarification when you don't understand.
- Ask about ways you can support your child at home.

We want to partner with you and your child to make sure they are getting the support that he/she may need to be successful. By using the MTSS framework, we will be able to provide early intervention from the data-driven decisions. Research shows the positive gains in early intervention. By communicating with us early and working together for your child, their potential for learning will be limitless.

Moravia Central School District commits to ongoing professional development for all staff members to provide research-based instructional strategies to support all students. We will continue to provide a multi-tiered system of behavioral and academic support which requires educators to collect and analyze data to identify individual student needs. The data collected will be used to help us make informed decisions about the effectiveness and/or need for modification to the interventions. This will then be shared with families in progress reports.